

32ND DBE WORKSHOP & SECRETARY'S GOLDEN SHOVEL AWARDS

PURSUE ■ WIN ■ EXECUTE
Diversifying Contracts in Design and Construction

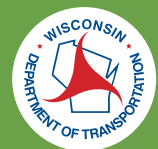


February 13 and February 14, 2018
Country Springs Conference Center, Waukesha, WI

WisDOT Division of Transportation System Development
Office of Business Opportunity and Equity Compliance
4802 Sheboygan Avenue, Madison, WI 53705

National Association of Minority Contractors
Wisconsin Chapter
NAMCWI.ORG

PRESENTED BY





Building meaningful business partnerships

Supplier Diversity Initiative

At WEC Energy Group, we believe that using diverse suppliers makes good business sense. Supplier diversity fosters competition, enhances job creation and generates additional purchasing power in the communities where we do business. We are committed to building meaningful business partnerships with certified minority-, women-, service-disabled- and veteran-owned business enterprises.

Learn more about our Supplier Diversity Initiative and how to become a certified M/W/SD/V business at www.wecenergygroup.com/sdi.



WEC Energy Group, based in Milwaukee, is one of the nation's largest electric and natural gas delivery holding companies, serving 4.4 million customers in Wisconsin, Illinois, Michigan and Minnesota.

TABLE OF CONTENTS

State of Wisconsin Welcome Letters	4
NAMC-WI Leadership Welcome Letters	5
Conference Layout Map	6
Directory of Exhibitors and Resource Organizations.....	7
Day 1 – Conference Program	8
Day 2 – Conference Program	9
Project Profiles	10
Judge Doyle Square	
Aurora Hospital	
Illinois Tollway Tri-State Tollway	
Directory of Networking Contractors and Consultants	11
Project Profiles	12
Milwaukee Bucks Arena and Entertainment Block	
BMO Harris Financial Center at Market Square	
Day 1 – General Session - Sponsor Highlights	13
Project Profile: Foxconn	14
Day 2 – Foxconn Panel Breakfast	15
NAMC-WI Mission Statement	16
Awards Luncheon Program	17
NAMC-WI Golden Champion Award for Leadership in Minority Business Development	18
NAMC-WI Thank You Award	19
DBE Program History	20
Secretary's Golden Shovel Award 2018 Winners and Nominees	21
Secretary's Golden Shovel Hall of Fame 2018 Inductees	22
Secretary's Golden Shovel Hall of Fame Members 2000 – 2018	23
Thank You to Sponsors	25

ON THE COVER

TOP: Milwaukee Bucks Arena construction photo provided by GRAEF

BOTTOM: Zoo Interchange construction photo provided by WisDOT

Welcome



Thank you for making time in your schedule to attend this important conference. These are exciting times for Wisconsin. Our state's economy is growing, with businesses starting, expanding, or moving in all the time. That means lots of opportunities for construction and contracting

to support the buildings and infrastructure that house our companies and move our goods. And it's important that all of Wisconsin shares in our state's prosperity, which is why I'm so encouraged by the many minority and women-owned businesses flourishing across our state, creating wealth and hiring friends, family, and neighbors. I look forward to celebrating these successes with each of you at the Golden Shovel Award luncheon on Thursday. Until then, FORWARD!

Lieutenant Governor Rebecca Kleefisch
State of Wisconsin



Greetings Friends, On behalf of the members of the Wisconsin State Senate I welcome the members of the National Association of Minority Contractors! I have the honor of representing a senate district in the heart of Milwaukee, an entrepreneurial hub for our state where creative

and innovative businesses are on the rise. Economic Sustainability is a pillar of my legislative agenda. I come from a long line of entrepreneurs, and have been a champion for small business owners for over 15 years. I know first-hand that the best way to move the economy forward is to invest in our small business economy so they can become employers; training our workforce through apprenticeship, internships and entry level jobs. I share your commitment to diversity and innovation. I look forward to addressing you at the Golden Shovel Award luncheon on Tuesday, February 13, 2018.

Senator Lena C. Taylor
State of Wisconsin



On behalf of the Wisconsin Department of Transportation (WisDOT), welcome to the 32nd Annual Golden Shovel Awards. The department is honored for the opportunity to recognize a job well done by so many of our colleagues in the highway improvement business.

At WisDOT, our goal is to focus on the right project in the right place at the right time, and we work hard to be a good steward of public resources. Our efforts are greatly assisted whenever we have the opportunity to work with talented, innovative contractors and subcontractors who help not only deliver a quality product but protect the project's bottom line. Under Governor Walker's leadership, our economy is growing, employment is at historic highs and unemployment is at historic lows. The state is moving forward!

Golden Shovel is a celebration of your many contributions to ensure a safe, efficient transportation system for the commuters, visitors and businesses that help to define our greater success in the State of Wisconsin. We encourage you to maximize this time to learn more about best practices and network with others throughout the industry.

Thank you again for all that you do. The Wisconsin Department of Transportation wishes you continued success.

Dave Ross
Secretary
Wisconsin Department of Transportation

NATIONAL ASSOCIATION OF MINORITY CONTRACTORS - WI CHAPTER

NAMC Leadership



It is my honor to welcome you to the 32nd Annual DBE Workshop and Secretary's Golden Shovel and NAMC's Golden Champion Awards Conference. We are proud to partner with the Wisconsin Department of Transportation for the third year in a row.

Our previous collaborations have been a huge success and we will continue to grow the event. With the completion of WisDOT Megaprojects and the anticipated growth in the building trades, we felt the need to reach out to other contracting opportunities for our small businesses thus the theme of our event, Pursue – Win – Execute: Diversifying Contracts in Design and Construction; our primary objective for both the highway and building trades businesses.

We are excited about the Sponsor Highlights on Day 1 and even more excited about the Foxconn presentation on Connected & Automated Vehicle Highway Technology on Day 2.

For more than 30 years, WisDOT has played an active role through the disadvantaged business program to include minority and small businesses in its contracting process through stakeholders' meetings such as the Transportation Advisory Committee (TRANS-AC) and Transportation Consultant Advisory Committee (TRANS-CAC). Through these committees we have achieved much but much more is essential to be done to ensure DBE firms are actively participating in contracts in all regions of Wisconsin.

But today we celebrate the successes of the Secretary's Golden Shovel nominees and winners and the National Association of Minority Contractors Golden Champions for Leadership in Minority Business Development in Wisconsin Construction Industry. Congratulations to all!

Pursue, Win, Execute.

Brian Mitchell, P.E.

President
National Association of Minority Contractors-Wisconsin



On behalf of the National Association of Minority Contractors – Wisconsin (NAMC-WI), I commend you on your attendance, participation and support of the 32nd Annual DBE Workshop & Secretary's Golden Shovel and NAMC Golden Champion Awards.

Working with the Wisconsin Department of Transportation, we have achieved a truly transformative event. Together, we are creating movement in our industry that brings diverse resources from leading road construction, general contractors, building trades organizations and major stakeholders under one roof to productively maximize your relationship building opportunities.

We are extremely proud to have major presentations from Aurora Healthcare, BMO Harris Bank, Senior Vice President of the Milwaukee Bucks Alex Lasry, Foxconn executives, and Keynote Presentations from State Senator Lena Taylor and the Lieutenant Governor Rebecca Kleefisch.

This event features full presentations on mega projects and contracting opportunities from the Wisconsin Department of Transportation SE Region, City of Madison and City of Milwaukee.

A special Thanks to our NAMC partners, sponsors, and Wisconsin businesses who truly make the movement happen by reinforcing our goals of diversifying contracts in design and construction.

NAMC continues to lead the charge in creating greater access to opportunity for minority suppliers, contractors, consultants and trucking firms in the construction industry.

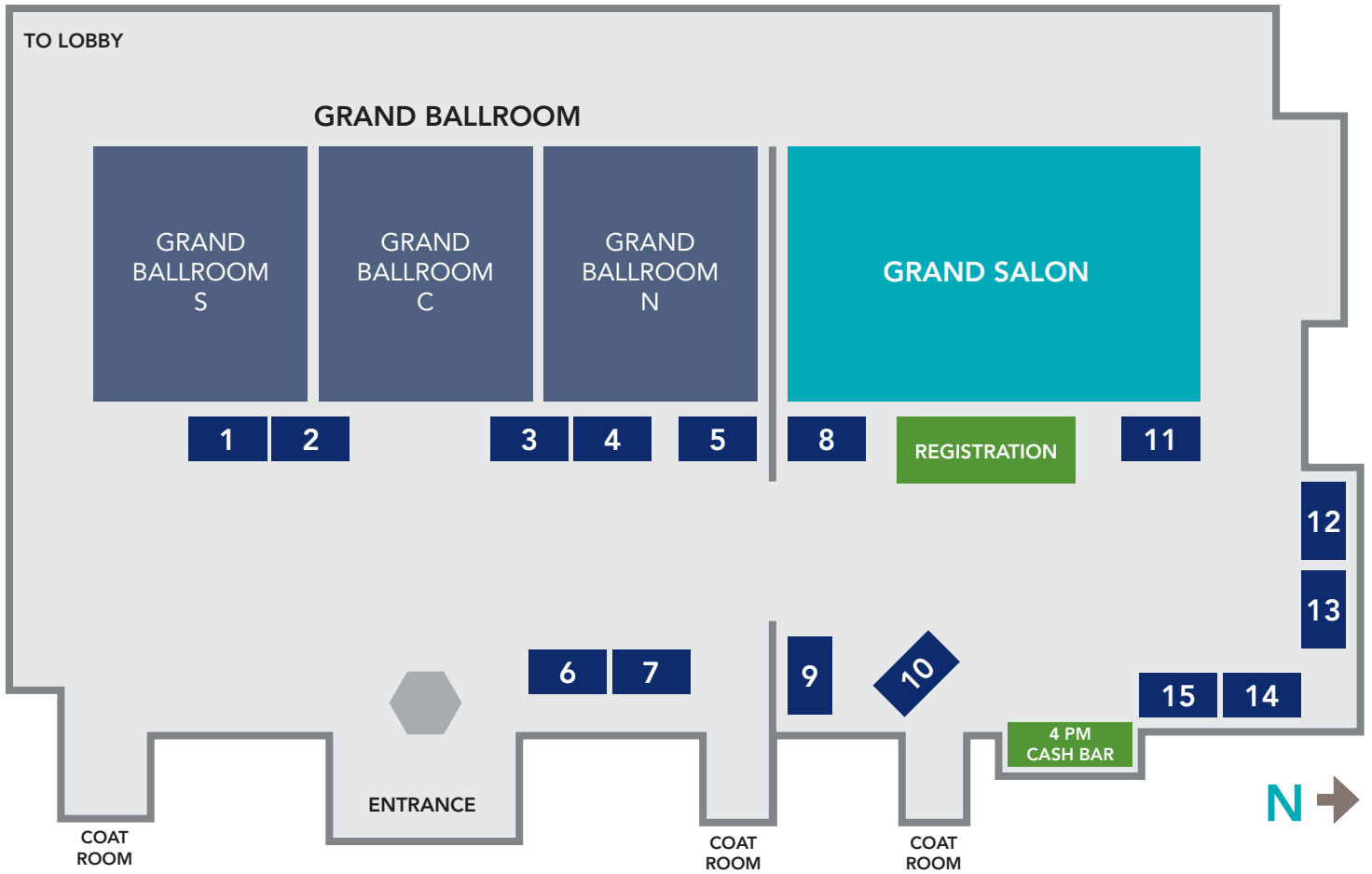
Welcome to the 32nd Annual DBE Workshop & Secretary's Golden Shovel and NAMC Golden Champion Awards Conference.

Pursue, Win, Execute.

Ugo Nwagbaraocha

Vice President
National Association of Minority Contractors-Wisconsin

CONFERENCE LAYOUT



CONFERENCE EXHIBITORS

- | | | | |
|---|---|----|---|
| 1 | I-94 Wisconn Valley Construction Project | 8 | NAMC-WI |
| 2 | Ethnically Diverse Business Coalition US | 9 | DBE Program Support Services |
| 3 | DOT Small Business Transportation Resource Center | 10 | Wisconsin Chinese Chamber of Commerce |
| 4 | Lake Edge Logistics, LLC | 11 | Diamond Disc |
| 5 | INFO TECH Bid Express Small Business Network | 12 | Industrial Battery Supply |
| 6 | SBA - WI | 13 | AEROWORKS |
| 7 | WI Concrete Pipe Association | 14 | BestEd Business |
| | | 15 | North Central Minority Supplier Development Council |

DIRECTORY

Directory of Exhibitors and Resource Organizations



4N Consultants

Jaya Sharma
jsharma@cityofmadison.com
608-695-0530
1907 Sherman Ave. Apt. 15
Madison, WI 53704

AACCW

Shawntel Mosby
smosby@aacccwiscnsin.org
414-462-9450
633 W. Wisconsin Ave., Ste. 603
Milwaukee, WI 53203

Aeroworks Productions*

Adam Andrews
adam@
aeroworksproductions.com
262-455-5135
7740 29th Ave
Kenosha, WI 53143

AICCW

Gary Mejchar
gary.aiccw@gmail.com
414-604-2044
10809 W. Lincoln Ave. Ste 102
W. Allis, WI 53227

Best Ed Business

June Perry
contact@BestEdBusiness
(414) 313-9762
6100 W Mequon Rd
Mequon, WI 53092

Brown Beasley Accounting LLC

Lydia Beasley, CEO
Lydia@BBA-Accountant.com
414-264-6490 ext. 3
1850 N. Dr. MLK Drive
Milwaukee, WI 53212

Wisconsin Chinese Chamber of Commerce*

Connie Li
info@wiscc.org
608.268.3911
www.wiscc.org
Milwaukee, WI 53200

City of Madison-Dept. of Civil Rights

Norman Davis
ndavis@cityofmadison.com
608-266-4910
210 MLK Blvd., Rm. 523
Madison, WI 53703

City of Milwaukee

Nikki Purvis
npurvi@milwaukee.gov
414-286-5553
200 E. Wells St., Rm. 606
Milwaukee, WI 53202

Diamond Discs International*

Ugo Nwagbaraocha
ugon@diamonddiscs.net
414-543-4545
8530 West National Avenue
West Allis, WI 53227

DOA/WI Supplier Diversity Program*

Truphosa Mwololo
doawispro@wisconsin.gov
414-278-5037
101 E. Wilson St.
Madison, WI 53703

First American Capital Corp.

Nico Alamo
nico@aiccw-facc.org
414-604-2044
10710 W. Scharles Ave.
Hales Corners, WI 53130

Forward. Service Corp.

Ranard Morris
jmarks@fsc-corp.org
608-244-3526
4600 American Pkwy, Ste 301
Madison, WI 53718

Harkinson Consulting

Julie Harkinson
info@harkinsonconsulting.com
608-722-5169
250 E Wisconsin Ave. #1800
Milwaukee, WI 53202

HWCC

Ger Thao
ger@hmongchamber.org
414-645-8828
6815 W. Capitol Dr., Ste. 204
Milwaukee, WI 53216

Illinois State Toll Highway Authority

Gustavo Giraldo
lponce@getipass.com
603-241-6800
2700 Ogden Ave.
Downers Grove, IL 60515

Industrial Battery Service*

Larry Folz
larry@ibswis.com
262-689-7778
842 Main St.
Belgium, WI 53004

Info Tech - Bid Express Service*

Barry Sanders
customer.support@bidx.com
888-352-2439
2970 SW 50th Terrace
Gainesville, FL 32608

Johnson Media Consulting*

Matthew Johnson
johnsonmediaconsulting@
gmail.com
414-372-5000
P.O. Box 511643
Milwaukee, WI 53203

KL Engineering, Inc.

Kim Lobdell
klobdell@klengineering.com
920-347-1218
1537 Park Place, Ste. 950
Green Bay, WI 54304

M Squared Engineering

Minal Hahm
minal@
msquaredengineering.com
262-376-4246
W62 N215 Washington Ave.
Cedarburg, WI 53012

Milwaukee Dept. of City Development

Commissioner Rocky Marcoux
teddy.benis@milwaukee.gov
414-286-5467
809 N. Broadway
Milwaukee, WI 53202

NAMC-WI*

Brian Mitchell
contactus@namcwi.org
414-454-9475
6122 N. 76th St.
Milwaukee, WI 53218

North Central MSDC*

Heather Olson
holson@N.centralmsdc.net
414-847-6497
500 W. Silver Spring Dr. #K-200
Glendale, WI 53217

Prism Technical

Randy Crump
abenett@prismtechnical.com
414-847-0990
2745 N MLK Dr., Ste. 100
Milwaukee, WI 53212

raSmith

Benji Hayek
benjie.hayek@rasmith.com
262-317-3321
16745 W. Bluemound Rd.
Brookfield, WI 53005

Small Business Administration - WI*

Shane Mahaffy
darryl.mahaffy@sba.gov
414-297-3941
310 W. Wisconsin Ave., #400
Milwaukee, WI 53203

The Business Council, Inc.

Marjorie Rucker
mrucker@mmac.org
414-287-4174
756 N. Milwaukee St., #400
Milwaukee, WI 53202

Tunji-Lesi CPA

Adetunji Lesi
tunjiles@tunjilesicpa.com
608-721-1745
6314 Odana Rd., #14
Madison, WI 53719

USDOT SBTRC-Great Lakes Region

Gabriela Garcia
ggarcia@ihccbuisness.net
312-425-9500
222 W Merchandise Mart Plaza
Chicago, IL 60654

Walling Consulting Services

Van Walling
van@wallingscs.com
414-702-1311
W173 N10200 Woodbridge Ln.w
Germantown, WI 53022

WEDC

Seyoum Mengesha
seyoum.mengesha@wedc.org
608-210-6880
201 W. Washington Ave.
Madison, WI 53703

WI Concrete Pipe Association*

Clark Wantoch
clark4concretepipe@wcpa.com
414-327-5272
6954 W. Tesch Ave.
Milwaukee, WI 53220

WisDOT DBE Program

Rosalind Roberson
rosalind.roberson@dot.wi.gov
414-438-2154
6150 W. Fond du Lac Ave
Milwaukee, WI 53209

WPI

Aina Vilumsons
ainav@wispro.org
414-270-3600
10437 Innovation Dr., Ste. 320
Wauwatosa, WI 53226

Write Like That, Inc.

Marci Martin
marci@writelikethat.com
608-797-7350
9789 Enterprise Rd.
Tomah, WI 54660

WRTP/BIG STEP

Laura Heller
lheller@wrtp.org
414-937-3600
3841 W Wisconsin Ave.
Milwaukee, WI 53208

TUESDAY, FEBRUARY 13

DAY 1 conference schedule

7:00-9:00 am	PRE-CONFERENCE DBE ORIENTATION			
	Newly certified DBE firms will learn how to do business with WisDOT and other agencies in Wisconsin. They will know the benefits of becoming DBE certified, the pros and cons of government contracting and who to call for help. Attendees will understand contract specifications and requirements, DBE Program rules, DBE goal setting policies, and strategies for finding the right contract.			
9:00-9:30 am	GENERAL REGISTRATION			
	Grand Salon	Grand Ballroom N	Grand Ballroom C	Grand Ballroom S
9:30-10:15 am	Daily Reporter 2018 Construction Outlook	Project Detail Discussions: Business Resources	Are You Working in Your Business or Are You Working on Your Business?	Labor Compliance Investigations: Overview & Outlook
15 minutes	NETWORKING BREAK			
	Grand Salon	Grand Ballroom N	Grand Ballroom C	Grand Ballroom S
10:30-11:15 am	AEROWORKS Drone Presentation	Understanding Financial Reporting	Four Essential Elements for Building Your Business	How to Bring Life to Your EEO/Affirmative Action Program
15 minutes	NETWORKING BREAK			
11:30am-1:00pm	SPONSOR HIGHLIGHT LUNCHEON - Grand Salon			
15 minutes	NETWORKING BREAK			
	Grand Salon	Grand Ballroom N	Grand Ballroom C	Grand Ballroom S
1:15-2:15 pm	Open	Masterworks PDH: 1	Transportation Panel: WisDOT and WTBA Perspectives	Networking: Community Workforce Resources
15 minutes	NETWORKING BREAK			
	Grand Salon	Grand Ballroom N	Grand Ballroom C	Grand Ballroom S
2:30-3:20 pm	Project Detail Discussions: Government Municipalities	Juggling Chainsaw: Proven Processes to Help Manage Your Business	Networking with WisDOT	Emerging Transportation Career Trends
10 minutes	NETWORKING BREAK			
	Grand Salon	Grand Ballroom N	Grand Ballroom C	Grand Ballroom S
3:30-4:20 pm	Project Detail Discussions: Supplier Diversity	Daily Reporter Top 10 Apps for Construction	Scheduled Networking: Prime Consultants and DBE Firms	Networking: Workforce Opportunity Session
4:30-6:00 pm	NETWORKING RECEPTION			

WEDNESDAY, FEBRUARY 14

DAY 2 conference schedule

7:30-8:00 am	GENERAL REGISTRATION			
8:00-10:00 am	FOXCONN PANEL BREAKFAST - Grand Salon			
	Foxconn is a once-in-a-century opportunity for Wisconsin because of its \$10 billion capital investment and projected 13,000 jobs but is also technologically trailblazing in its use of autonomous connected vehicles. WisDOT will implement Connected and Automated Vehicle (CAV) technology and functionality to assist with freight and staff movements on Interstate 94. Listen to a panel of experts discuss how this new technology will impact our transportation system and its users.			
15 minutes	NETWORKING BREAK			
10:15-11:05 am	Grand Salon	Grand Ballroom N	Grand Ballroom C	Grand Ballroom S
	OPEN	Leveraging Your DBE Beyond WisDOT	Contractor Speed Networking	How will Wisconsin's Changing Demographics Effect the Construction Industry
15 minutes	NETWORKING BREAK			
11:20-12:20 pm	Grand Salon	Grand Ballroom N	Grand Ballroom C	Grand Ballroom S
	Project Detail Discussions: Public/Private Projects	Who has the Liability? PDH: 1	The Rules of Good Faith Effort	New Prevailing Wage Law Changes and General Issues
10 minutes	NETWORKING BREAK			
12:30-2:00 pm	GOLDEN SHOVEL AWARDS LUNCHEON - Grand Salon			
	Featuring two informative presentations from Lt. Governor Rebecca Kleefisch and DOA Director Matt Moroney on how Foxconn will change Wisconsin, Racine, and Kenosha's economic landscape within the next three years.			

COLOR CODE ACTIVITY KEY

General Sessions
Professional Development Workshops
Networking Reception
Networking Sessions
Project Detail Discussions
10- or 15-Minute Networking Break



PROJECT PROFILES

Judge Doyle Square

City of Madison is pursuing an exciting new development opportunity known as Judge Doyle Square in the heart of the city's central business district. Judge Doyle Square is a two-block area in downtown Madison, Wisconsin. It is the site of the Madison Municipal Building, Government East parking garage and has been identified by the city as a location with significant redevelopment potential. The estimated cost is \$175 million. The redevelopment of this two-block area in Madison's downtown will unite the vibrant Capitol Square, the Monona Terrace Community and Convention Center with a significant mixed-use development project comprised of commercial, hotel, residential, retail, and restaurant use combined with public parking and bicycle facilities. The redevelopment will include a newly constructed underground parking

garage and a brand new 253-room hotel. The new parking garage is part of an effort by the city to reduce surface parking. The \$32 million parking garage, which will be located behind the Madison Municipal Building, represents the public component of the redevelopment of two downtown blocks. Completion of the 620-car public parking garage is slated for February 2019, upon which the second phase of development will begin. Chicago-based Beitler Real Estate Services is leading the private portion of the project, which includes building a new hotel, apartment units, retail space and a bike center. The \$200 million-dollar investment will improve public facilities, increase property values, employment opportunities, and downtown residents not to mention the added capitol from visitors to the region bringing a significant boost to the city's economy.

Aurora Hospitals

Aurora Health Care has announced several projects totaling more than \$500 million. Projects include:

- \$55.5 million ambulatory surgery center and medical office building in the rapidly growing 84 South development in Greenfield. The project will enhance patient access to a variety of services, including general surgery, orthopedics, pediatrics, GI, pain management and urology. The multistory, approximately 130,000-square-foot facility would include an outpatient imaging center, sports health
- and rehabilitation, a specialty physician clinic and dispensary pharmacy. The project is expected to be completed in the summer of 2019.
- \$130 million health center that includes an outpatient surgery center and medical office building in Kenosha. The location is west of Interstate 94 and north of Highway 50.
- \$40 million expansion of the Athletic Performance Research Center at Marquette University.

Illinois Tollway Tri-State Tollway: Building for the Tomorrow

Roadway, bridge and ramp construction is scheduled throughout the Tri-State Tollway (I-94/I-294/I-80). Improvements are necessary to extend the life of the roadway and bridges, provide safe and convenient travel for Tollway customers and keep the Illinois Tollway system in good repair.

The Central Tri-State Concept is one of the early phases of the project's development. This concept includes findings and draft recommendations being considered and evaluated by the Tollway as it moves forward in the reconstruction of the Central Tri-State.

A detailed planning and refinement process is underway to complete a design concept for rebuilding the Central Tri-State Tollway (I-294). This process includes outreach efforts with customers, communities, businesses and partners to identify regional improvements and continue to refine the design details. The proposed concept maximizes the value of investments into the Central Tri-State corridor for Tollway customers and the region.

DIRECTORY

Directory of Networking Contractors & Consultants

AECOM

Mike Preboske
michael.preboske@aecom.com
414-944-6080
1555 N. Rivercenter Dr., Ste. 214
Milwaukee, WI 53212

Alfred Benesch & Company

Amanda Zacharias
azacharias@benesch.com
414-308-1310
1300 W. Canal St., Ste. 150
Milwaukee, WI 53233

Ayres Associates

John Davis
davisj@ayersassociates.com
262-523-4488
N17 W24222 Riverwood Dr, #310
Waukesha, WI 53188



CORRE, Inc.

Troy Gagner
tgagner@correinc.com
608-828-1011
175 E Wisconsin Ave., Ste. 7
Oconomowoc, WI 53066

D L Gasser Construction

Tina Neuman
tina.neuman@dlgasser.com
608-356-3311
1000 Terrytown Rd.
Baraboo, WI 53913

DAAR

Frank D'Amato
frank.damato@daarcorp.com
414-225-9817
325 E. Chicago St., Ste. 300
Milwaukee, WI 53202

Dakota Intertek Corp.

Wenbin Yuan
wyuan.dakota@gmail.com
262-784-8844
16600 W. National Ave.
New Berlin, WI 53151

EMCS, Inc.

Dave Brose
dbrose@emcsinc.com
414-347-1607
1300 W. Canal St., Ste. 200
Milwaukee, WI 53233

Fahrner Asphalt Sealers

Megan Myllyla
megan.myllyla@fahrnerasphalt.com
715-341-2868
2800 Mecca Dr.
Plover, WI 54467

HNTB Corp.

Scott Solverson
ssolverson@hntb.com
414-399-3349
10 W. Mifflin St, #300
Madison, WI 53703

Hoffman Construction Co.

Jessica Peterson
jessicap@hoffcons.com
715-284-2512
123 County Rd. A
Black River Falls, WI 54615

Hunzinger

Joan Zepecki
JZepecki@hunzinger.com
262-797-0797
21100 Enterprise Ave.
Brookfield, WI 53045

IGE Integrity Grading & Excavating

Ruth Geier
ruth@integrityge.com
715-359-4042
605 Grossman Dr.
Schofield, WI 54476

J.H. Findorff & Son

Carl Wickman
cwickman@findorff.com
414-272-8788
1600 N. 6th St.
Milwaukee, WI 53212

Jacobs Engineering (CH2M)

Jeff Bauer
jeff.bauer@ch2m.com
414-272-2426
135 S. 84th St., Ste. 400
Milwaukee, WI 53214

James Peterson Sons, Inc

Douglas Johnson
ann.bohn@jpsbp.com
715-748-3035
N2251 Gibson Dr.
Medford, WI 54451

Kiewit Infrastructure Co.

Daisy Roque
Daisy.Roque@kiewit.com
773-458-1250
8501 W. Higgins Rd., #400
Chicago, IL 60631

Lunda Construction Co.

Yolanda McIntosh
ymcintosh@lundaconstruction.com
651-437-9666
15601 Clayton Ave. E.
Rosemount, MN 55068

NETWORKING SCHEDULE

DAY 1 - February 13th

2:30-3:20 pm Networking with WisDOT
3:30-4:20 pm Schedule Networking with Consultants
TRANS Workforce Opportunity Session

DAY 2 - February 14th

10:15-11:05 am Contractor Speed Networking
Speed Networking fast paced, timed, facilitated, rotational
exercise that allows 'face time' between a stationary prime
contractor and a rotating business

Mathy Construction Company

Andy Marinelli
andy.marinelli@mathy.com
608-783-6411
920 10th Ave. N.
Onalaska, WI 54650

Mead & Hunt

Rusty Chesmore
rusty.chesmore@meadhunt.com
414-935-4270
10700 W Research Dr., #155
Milwaukee, WI 53226

MEI

Nelson Soler
soler@multiculturalinstitute.com
414-383-4633
2778 S 35th St., Ste. 203
Milwaukee, WI 53215

Michels

Brett Kahn
bkrahn@michels.us
920-583-3132
817 W Main St.
Brownsville, WI 53006

MSA Professional Services, Inc.

Mike Statz
mstatz@msa-ps.com
608-242-7779
2901 International Ln., #300
Madison, WI 53704

Northeast Asphalt, Inc.

Zachary Jolma
zjolma@neasphalt.com
920-757-9200
W6380 Design Dr.
Greenville, WI 54942

Oneida ESC Group

Matt Kunstman
kgraef@oescgroup.com
414-331-9374
5100 Eastpark Blvd., #300
Madison, WI 53718

Rock Road Companies, Inc.

Meghan Vaxman
mvaxman@rockroads.com
608-752-8944
301 W B R Townline Rd.
Janesville, WI 53546

raSmith National

Rachel DeSombre
bonnie.horning@rasmith.com
262-317-3311
16745 West Bluemound Road
Brookfield, WI 53005-5938

SEH

Darren Fortney
dfortney@sehinc.com
608-620-6199
6808 Odana Rd., #200
Madison, WI 53719

Stark Pavement Corp.

Greg Schmeling
gschmeling@starkcorp.us
414-466-7820
12845 W. Burleigh Rd.
Brookfield, WI 53005

WEC Energy Group

Jerry Fulmer
jerry.fulmer@we-energies.com
414-221-2345
231 W. Michigan St.
Milwaukee, WI 53203

Zenith Tech, Inc.

Scott Piefer
spieffer@zenithtechinc.com
262-524-1800
N6 W23633 Bluemound Rd.
Waukesha, WI 53188

Zignego Company, Inc.

Dan Zignego
dzignego@zignego.com
262-547-4700
W226 N2940 Duplainville Rd.
Waukesha, WI 53186

PROJECT PROFILES

Milwaukee Bucks Arena and Entertainment Block



Alex Lasry
Milwaukee Bucks
Senior Vice
President of
Strategy
& Operations

The Wisconsin Entertainment and Sports Center (WESC), future home of the Milwaukee Bucks, will

that opened in August. Mortenson Construction is the construction manager for the WESC. About 200, primarily iron workers, were on the site last year. That portion of the project is winding down and work is ramping up on the interior. Amenities such as escalators, plumbing and electrical networks, and heating and cooling are being set in place.

be a state-of-the-art, multi-purpose sports and entertainment center in downtown Milwaukee, and an iconic landmark for the City and the State of Wisconsin. The \$524 million arena set to open for the 2018-19 NBA season, a new parking structure that recently opened and a \$30 million practice facility

Work is expected to begin soon on a fourth aspect of the Bucks complex, the Live Block entertainment space, which will include bars, restaurants and public space just east of the new arena. Hunzinger Construction is managing the construction for the entertainment plaza northeast of the arena.

BMO Harris Financial Center at Market Square



Eric Wynn
Findorff
Dir. of Project
Management &
General Manager
for Southeast
Wisconsin

Designed by Milwaukee-firm Kahler Slater, Irgens Partners will develop a new 25-story tower near Milwaukee's City Hall and lease it to BMO Harris Bank and other tenants. The new name for the tower is BMO Harris Financial Center at Market Square. Crews from J.H. Findorff & Son Inc. and Viet & Company will begin working on the glassy new, 25-story, 360,000-square-foot (sf) high rise this year.

BMO Harris will lease 123,000 sf in the new building, including first-floor space for a flagship retail bank. The new tower will be built on the site of BMO's current parking garage, eliminating the need for any land acquisition and keeping BMO in "the civic and cultural heart of the city" as stated by the firm's CEO Mark Irgens. Irgens company will also purchase and renovate BMO's current building at 770 N. Water St.

A new parking structure will be constructed atop the surface 14,400 sf parking lot at 769 N. Broadway.



Jeffrey Garretson
Findorff
Director of
Business
Development

The new tower is planned to top 335 feet, roughly 50 feet taller than its current building. When finished it would be the 12th tallest building in the city.

Efficiency improvements in parking garage design will allow the new 590-stall garage to occupy a smaller footprint than the current garage.

The new tower will feature several amenities, including a shared, multi-media conference center, common tenant lounge and terrace on the 11th floor and tenant fitness center. The standard floor plate in the building is 25,000 sf, with nine-foot, six-inch ceilings. Floor-to-ceiling windows and column-free corners are included on every floor.

The new tower will allow BMO to consolidate their offices in one building. The firm currently occupies almost all of its current building with roughly 700 employees, as well as leasing space in the nearby Milwaukee Center for approximately 200 additional employees. All will move to the new building.

TUESDAY, FEBRUARY 13

DAY 1 general session

11:30 am - 1:00 pm

Welcome

Brian Mitchell

President
National Association of Minority Contractors -
Wisconsin (NAMC-WI)

Opening Remarks

Dave Ross

Secretary
Wisconsin Department of Transportation

Sponsor Highlights

Milwaukee Bucks Entertainment Block

Alex Lasry

Senior Vice President of Strategy
& Operations

J.H. Findorff & Son Inc

Eric Wynn,

Director of Project Management and
General Manager for Southeast Wisconsin

Jeffrey Garretson

Director of Business Development

Opportunity Presentation

Rocky Marcoux

Commissioner
City of Milwaukee,
Department of City Development

Keynote Presentation

State Senator Lena Taylor

Wisconsin 4th District



THE TRANSFORMATION OF

Milwaukee's downtown is proof of the city's renaissance and economy boosting prowess. Our presenters from the Milwaukee Bucks, J.H. Findorff & Son's and Milwaukee Department of City Development will show you the future of downtown Milwaukee and share opportunities for small businesses to participate. This dynamic session will command your attention with its message of opportunity, transformation, commitment and collaboration.



BMO Harris
Financial Center at
Market Square

PROJECT PROFILE

Foxconn

Foxconn Technology Group is a multi-national electronics contract manufacturing company headquartered in Taiwan. Foxconn is the global leader in manufacturing services for the computer, communication, and consumer electronics industry. Foxconn helps build products for many of the leading U.S. and international brands and household names in electronics. Notable customers include BlackBerry, iPad, iPhone, iPod, Kindle, Nintendo 3DS, Nokia, PlayStation 3, PlayStation 4, Wii U, and Xbox One. Foxconn also is a leader in research and development, focusing on the fields of nanotechnology, heat transfer, wireless connectivity, material sciences, and green manufacturing process. The company has received more than 55,000 patents worldwide.

President Donald Trump and Governor Scott Walker announced on July 26, 2017 that Foxconn will build a \$10 billion flat screen TV manufacturing plant in southeastern Wisconsin. The plant will be located just north of County Line Road and just east of I-94 in Mount Pleasant in southern Racine County. Foxconn has facilities in Asia, Brazil, Europe and Mexico. The Wisconsin facility will be its first significant investment in the U.S. The project is by far Wisconsin's largest economic development project and is the largest corporate attraction project in U.S. history as measured by jobs. The project also will be the largest greenfield investment by a foreign-based company in U.S. history as measured by jobs.

The Foxconn project is expected to have at least a \$7 billion annual economic impact on the state. The project will support approximately 10,000 construction jobs over each of the next four years as well as 6,000 indirect jobs resulting from construction. Once the Foxconn complex is fully operational, it is expected to employ up to 13,000 workers. In addition, the project is expected to create at least 22,000 indirect and induced jobs throughout the state.

WisDOT is planning a number of improvements to the infrastructure to mitigate the additional traffic demand resulting from Foxconn and induced development. The I-94 NS Project will be completed as well as expansions of Braun Road and CTH KR surrounding Foxconn. In addition, WisDOT will implement Connected and Automated Vehicle (CAV) functionality to assist with freight movement to and from General Mitchell International Airport and the shuttling of staff between a parking on the west of I-94 to and from the Foxconn plant via Braun Road and CTH KR. With planned future CAV technology, the completed I-94 NS project will provide safe and efficient travel, help facilitate new job opportunities, and will support businesses by providing just-in-time connection to world markets through General Mitchell International Airport. The plan is to complete the CAV work on Braun Street / CTH KR by the end of 2020 and I-94 by end of 2021.

WEDNESDAY, FEBRUARY 14

DAY 2 foxconn panel breakfast

8:00 am - 10:00 am

Welcome

E. Aggo Akyea

Director
WisDOT Office of Business Opportunity and Equity Compliance (OBOEC)

Brian Mitchell

President
National Association of Minority Contractors - Wisconsin (NAMC-WI)

PANEL PRESENTATION

**Connected & Automated Vehicle Highway Technology
for Wisconsin In Partnership with Foxconn**

Moderator

Dr. Connie Li, P.E.

President
TranSmart Technologies

FOXCONN PANEL



Dr. Alan Yeung
Director
U.S. Strategic Initiatives
for Foxconn



Brett Wallace
Foxconn Project
Director,
Wisconsin
Department of
Transportation



Dr. Bin Ran
Professor and Director
Connected Automated
Transportation Program,
University of
Wisconsin-Madison



Jim Barbaresso
Senior Vice President
National Practice
Leader for Intelligent
Transportation Systems,
HNTB

NATIONAL ASSOCIATION OF MINORITY CONTRACTORS



NAMC provides access, advocacy and development for members in collaboration with strategic alliances.

Founded in Oakland, California in 1969 by Raymond Dones and Joseph Debro, the National Association of Minority Contractors (NAMC) is the oldest minority construction trade association in the United States with over 50 Hall of Fame members and Legacy Builders and an annual project capacity of over one billion dollars nationally. Through a network of local chapters and in collaboration with strategic and corporate partnerships, NAMC assists members with building capacity by providing access to opportunity, advocacy, and contractor development training.

NAMC has a strong foundational history that has established a great legacy for the organization. NAMC's presence and voice in this industry is of even greater need today than ever before to continue the mission of providing Access (contract & resource opportunities), Advocacy (legislative impact), and Contractor Readiness (training, capacity building, and growth) for our members. The association strives to accomplish its goals in collaboration with major corporate partners, strategic alliances, and public agencies. The presence of NAMC today is a testament to its continuing legacy. The construction market is a relationship-driven industry. Business relationships must be developed; the strategies and approaches for pursuing, winning, and executing business is paramount. The future of NAMC lies in the enhancement of its Student Chapter Program as well as expanding our relationships with corporate partners to deliver the stated benefits of access, advocacy, and contractor readiness to our membership.

**"Adversity can engulf the individual but not the group.
If you are part of the group it weakens the adversity."**

Raymond Dones, Founder

WEDNESDAY, FEBRUARY 14

Wisconsin DOT Secretary's Golden Shovel and NAMC Golden Champion for Leadership Awards Luncheon

Wednesday, February 14
12:30 pm - 2:00 pm

Welcome

Brian Mitchell

President
National Association of Minority
Contractors - Wisconsin (NAMC-WI)

Bob Seitz

Deputy Secretary
Wisconsin Department of Transportation

Keynote Presentations



**Lieutenant Governor
Rebecca Kleefisch**
State of Wisconsin



Matt Moroney
Strategic Economic
Initiatives Director
Wisconsin Department
of Administration

AWARD PRESENTATIONS

NAMC Golden Champion Award for Leadership in Minority Business Development in Wisconsin Construction Industry

National Association for Minority Contractors

Brian Mitchell, President
Ugo Nwagbaraocha, Vice President
George Lawrence, Executive Director

Secretary's Golden Shovel Awards

Wisconsin Department of Transportation

Bob Seitz, Deputy Secretary
Joe Nestler, DTSD Administrator
E. Aggo Akyea, OBOEC Director

National Association of Minority Contractors Golden Champion Award for Leadership in Minority Business Development in Wisconsin Construction Industry



Ruben L. Anthony, Jr., Ph.D

Dr. Ruben L. Anthony, Jr., was appointed President & CEO of the Urban League of Greater Madison in March 2015. In this role, he is poised to place 1,500 people in sustainable waged jobs. Most of his career he served as a manager with the Wisconsin Department of Transportation; where he was the Deputy Secretary and the Chief Operations Officer of a \$3.2 billion agency with 3,600 employees from 2003 to 2010. In this capacity, the agency reached historically high disadvantaged business enterprise goals on all mega projects. In 2016, he was inducted into the WisDOT DBE Hall of Fame. He has also won local, regional and national awards from the US Small Business Administration, Excellence Awards from the Wisconsin Supplier's Diversity Council, a Stewardship and an Advocacy Award from the National Association of Minority Contractors. Ruben is the architect of the "Wisconsin Model" for increasing minority labor and disadvantaged business enterprise (DBE) participation. Dr. Anthony is the owner of RowJAC consulting Inc. and has provided capacity building, planning and other services to Minnesota DOT, Milwaukee County, the Milwaukee Sewerage District, the Dulles Airport and others. By many, Dr. Anthony is viewed as one of the nation's foremost experts on minority labor and business development issues.



Joan Zepecki

Joan Zepecki has worked at Hunzinger for 24 years as Diversity and Community Outreach Coordinator. She is extremely proud of their track record, of meeting and exceeding diverse contracting and inclusion goals. Hunzinger has had incredible results with over \$360 million in contracts awarded to minority, women, small or disadvantaged firms. They have also led the way in meeting workforce inclusion goals by completing Summerfest's Gateway Project which was a collaboration between the State of Wisconsin, Milwaukee County, the City of Milwaukee and Milwaukee World Festivals, Inc. – quite a group. The project had a 40% RPP goal and Hunzinger achieved 51%.

Zepecki's experience goes back to the preconstruction of the Wisconsin Convention Center and Miller Park projects where establishing and meeting inclusion goals were a new and developing concept. She successfully worked with the owners, their boards, government officials, community members and subcontractors to develop successful strategies that ensured success. She has been building on those action plans ever since.

NAMC GOLDEN CHAMPION AWARD

National Association of Minority Contractors Golden Champion Award for Leadership in Minority Business Development in Wisconsin Construction Industry



BMO Harris Bank

BMO Harris Bank provides a broad range of personal banking products and solutions through nearly 600 branches and fee-free access to over 40,000 ATMs across the United States. These include solutions for everyday banking, financing, investing, as well as a full suite of integrated commercial and financial advisory services. BMO Harris Bank's commercial banking team provides a combination of sector expertise, local knowledge and mid-market focus throughout the U.S. We partner closely with BMO Private Bank who serve a full range of client segments, from mainstream to ultra-high net worth, with a broad offering of wealth management products and solutions offered through offices across the United States. We help our customers make money make sense by delivering the broadest range of financial services. And, we have a deep commitment to the communities where our employees work and live.

Thank You Award



State Senator Lena C. Taylor

Senator Lena C. Taylor is a Democratic member of the Wisconsin Senate, representing the 4th District since 2005. In June 2012, Taylor was named co-chair of the Joint Committee on Finance. She is the first African-American woman ever to serve as the co-chair of the committee. As of her reelection in 2012, Senator Taylor currently serves on five different Senate Committees. She holds seats on two important economic committees: The Agriculture, Small Business, and Tourism Committee, and also the Economic Development and Local Government Committee. Senator Taylor also looks to promote voting equality and urban representation through her position on the Elections and Urban Affairs Committee. Senator Taylor also serves on the Senate Special Committee on Symposia Series on State Income Tax Reform Information. In past sessions, Senator Taylor served on the Joint Committee on Finance, and as the chair of the Senate Judiciary Committee, expanding the committee's work on criminal justice reforms and implemented the first ever "State of Justice" tour with the committee across Wisconsin.

SECRETARY'S GOLDEN SHOVEL AWARD

Wisconsin Department of Transportation 32nd Annual Secretary's Golden Shovel Award

DBE PROGRAM HISTORY

IN 1983, CONGRESS ENACTED the first Disadvantaged Business Enterprise (DBE) statutory provision that required USDOT to ensure that at least 10% of the funds authorized for the highway and transit federal financial assistance programs be expended with DBEs.

The legislation was proposed by Congressman Parren Mitchell who was characterized as a small business activist who authored legislation to move the minority segment of this country into the economic mainstream through federal government expenditures. He is credited with leading initiatives that increase minority participation under the Small Business Administration's 8(a) program, the Department of Defense's Goal Program, Public Law 95-507 and the Surface Transportation Assistance Act of 1982. Government advocacy is a cornerstone of effective DBE program implementation.

The DBE program legislation was intended to remedy past and current discrimination against disadvantaged

business enterprises; the legislation was codified in the Code of Federal Regulations at 49 CFR Part 26, which spells out the intent, implementing rules and program objectives. Intent and action are measured in the DBE program. DBE legislation requires each DOT-assisted state and local transportation agency to ensure nondiscrimination in contracting. Agencies must establish annual DBE goals, assign contract-specific DBE subcontracting goals, certify the eligibility of firms and help remove barriers to participation. The program's mission and purpose is foster equal opportunity in federally funded contracts. Implementing concepts are accountability, responsibility, achievement, inclusion and valuation.

It was only fitting, that WisDOT launch the Secretary's Golden Shovel Awards to recognize those who embody the principles of the DBE program and to memorialize WisDOT's progress toward fulfilling the vision of Congressman Parren Mitchell—to integrate the economic marketplace.

SECRETARY'S GOLDEN SHOVEL AWARDS' HISTORY

INITIATED IN 1985, one year following the inception of Wisconsin's Disadvantaged Business Enterprise (DBE) Programs, the Secretary's Golden Shovel Awards was spearheaded by then Programs Director, David Manning. The purpose and concept for the awards are to cite DBE firms for their outstanding contract and project performance during the year, for

program participation; and to recognize individuals, organizations, and groups instrumental to the success and progress of the DBE Program's concept and ideals. Those concepts and ideals remain true and clear today to assist DBE firms to work on WisDOT projects and compete in the market place outside of the DBE Program.

SECRETARY'S GOLDEN SHOVEL AWARD

congratulations!

2018 Winners

JT Engineering Inc

Interstate Sealant & Concrete Inc

Pro Electric Inc

Rochelle Codlyn

Terry & Nick Ni, Oneida Total Integrated Enterprises

Toki & Associates Inc

2018 Nominees

Arbor Green

Arrow Crete

Cardno Inc

Cisco Distributing

Era Valdivia

GAT Supply

Hard Rock Sawing & Drilling
Specialist Co

Interstate Sealant Inc

JT Engineering Inc

Matt Grove,
Wisconsin Transportation Builders
Association

Mega Rentals Inc

Outdoor Lighting

Pheifer Brothers Construction

Pro Electric Inc

Raynard Morris, Forward Services
Corporation

Rochelle Codlyn

Robins Trucking

Stark Pavement Corp

Terry & Nick Ni,
Oneida Total Integrated
Enterprises

Toki & Associates Inc

TranSmart Technologies

Zignego Company Inc



SECRETARY'S GOLDEN SHOVEL AWARD

congratulations!

2018 Hall of Fame Inductees

Pro Electric Inc

Pro Electric was established in March of 2005 by Craig Clements. Craig holds a State of Wisconsin Master Electrician License and Level II IMSA Certification. Craig has learned skills necessary to operate a successful electrical contracting business including: estimating, scheduling, procurement of materials, project managing and execution of projects. All of their electricians possess years of on-the-job experience. Not only that, they're also industry certified and committed to keeping up with the latest advances in the field. You can rest easy, because your electrical job will be in the best and most skilled hands that it can be. Services include traffic signals, street lighting, airport runway lighting & wiring, outdoor site lighting, freeway traffic management system (FTMS) installation, directional boring, trenching, fiber placement, lighting installations & upgrades, temp control systems, and much more.



Craig Clements

Toki & Associates

Toki & Associates, Inc. was established in 1987 as a corporation in the State of Wisconsin to provide multi-disciplined consulting engineering services. Since then, the firm has grown with an office in Milwaukee, Wisconsin providing architectural, engineering and construction services. Toki's principals, Theophilus Iyasele, P.E. and Olaitan Olapo, P.E., bring over 30 years of experience along with key personnel that have substantial experience with various government and private clients.

Toki & Associates, Inc. currently employs engineers, architects, construction managers, surveyors, field and CAD technicians and administrative support personnel. Our principals are actively involved in the management of all our projects. Our commitment to excellence and professionalism, together with sound management and technical skills have resulted in long term relationships with our clients.



Theophilus Iyasele, PE



Olaitan Olapp, PE

SECRETARY'S GOLDEN SHOVEL AWARD

32nd Annual Secretary's Golden Shovel Award Hall of Fame

Hall of Fame 2000-2018

Arbor Green
Bloom Consultants
Dolson, Inc.
Hoffman Construction
Kjohnson Engineers
Payne & Dolan
Zenith Tech
Arrow-Crete
Choice Construction

Habermehl Electric
Lunda Construction
Mega Rentals
TransSmart Technologies
Zignego Company
KL Engineering, Inc.
Pro Electric
Toki & Associates

Hafeezah Ahmad
Founder, EEO Youth Programs
Eugene Johnson
DBE Program Director 1991-2011
Dr. Ruben Anthony, Jr.
Deputy Secretary 2003-2011
Suzanne M. Jersild
I-39/90 Rock County Stakeholder
Advisor 2013-2016



EVENT SPONSORS

thank you sponsors!

SILVER



BRONZE



RECEPTION SPONSORS



CONTRIBUTING SPONSORS



FINDORFF BUILDS

OPPORTUNITIES FOR SUCCESS.



CONGRATULATIONS TO THIS YEAR'S GOLDEN SHOVEL AWARD WINNERS!

Findorff is proud to engage local community businesses and NAMC members through new construction opportunities in our communities.

Findorff
BUILDERS SINCE 1890



www.michels.us

MICHELS®

Your story is told
through the
things we build.



SERVICES PERFORMED

Michels is an industry-leading utility and infrastructure contractor offering Mainline and Gas Distribution Pipeline Construction, Horizontal Directional Drilling, Electrical Transmission, Substation and Distribution Construction, Pipe Rehab, Direct Pipe, Fiber Optic Networks, Heavy Civil Work, Deep Foundations, Tunneling, Dewatering, Paving, Crushing, Road Building and Bridges.

**Swift action & attitude are
GAME CHANGERS.**

UP FOR THE CHALLENGE?

www.michelscareers.us

AA/EOE/M/W/Vet/Disability



HUNZINGER
 IS PROUD TO RECEIVE A 2017
 GOLDEN CHAMPION AWARD

Hunzinger proudly supports NAMC and has awarded more than \$360 million in direct contracts to over 100 diverse partners in the last 20 years.



For information on diverse contracting,
 contact our Diversity Coordinator,
 Joan Zepecki at jzepecki@hunzinger.com
WWW.HUNZINGER.COM | 262.797.0797



WISCONSIN

ENTERTAINMENT AND SPORTS CENTER

**PROUDLY DESIGNED AND BUILT
WITH A STRONG LOCAL WORKFORCE**



THE NEW HOME
OF THE MILWAUKEE BUCKS
OPENS IN 2018

GET YOUR NEW ARENA SEATS NOW!

BUCKS.COM/MVP



Grading Your Future with INTEGRITY.



We strive for **INTEGRITY & EXCELLENCE** in everything we do.

- General Contracting
- Site Development and Land Clearing
 - WI D.O.T. Projects
 - EPA Super Fund Projects
- Storm Sewer, Sanitary Sewer and Water Main
- Construction and Reconstruction
 - Heavy Highway, Local Street
 - Lake and Pond
- Large Environmental Clean-up Projects
- Demolition
- Snow Removal
- Maintenance Contracts
- Material Crushing and Screening
- Construct, Operate and Close Landfills

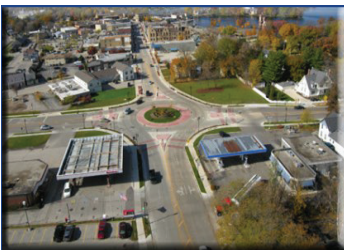


Headquarters: 605 Grossman Drive • Schofield, WI 54476 • 715-359-4042
Second Location: 151 Horizon Drive • Suite B • Verona, WI 53593 • Fax: 608-497-0611
www.integrityge.com

Affirmative Action / Equal Opportunity Employer

TranSmart & its wholly-owned subsidiary EJM Engineering Congratulates

All Winners of
The Secretary's Golden Shovel Awards
And
NAMC Golden Champion Awards



The TranSmart/EJM Services Include:

- Highway Engineering and Design
- Civil Engineering
- Electrical Engineering
- Structural Engineering
- Traffic Engineering
- Intelligent Transportation Systems (ITS)
Design, Implementation, Operation & Maintenance
- Security/Communication/ Technology Systems
- Automated & Connected Vehicle Highway System Planing & Implementation
- Construction Management & Inspection
- Multi-Modal Transportation Planning & Design
- Program Management
- Asset Management System Design & Implementation
- Transportation Planning & Environmental Documentation



www.transmartinc.com

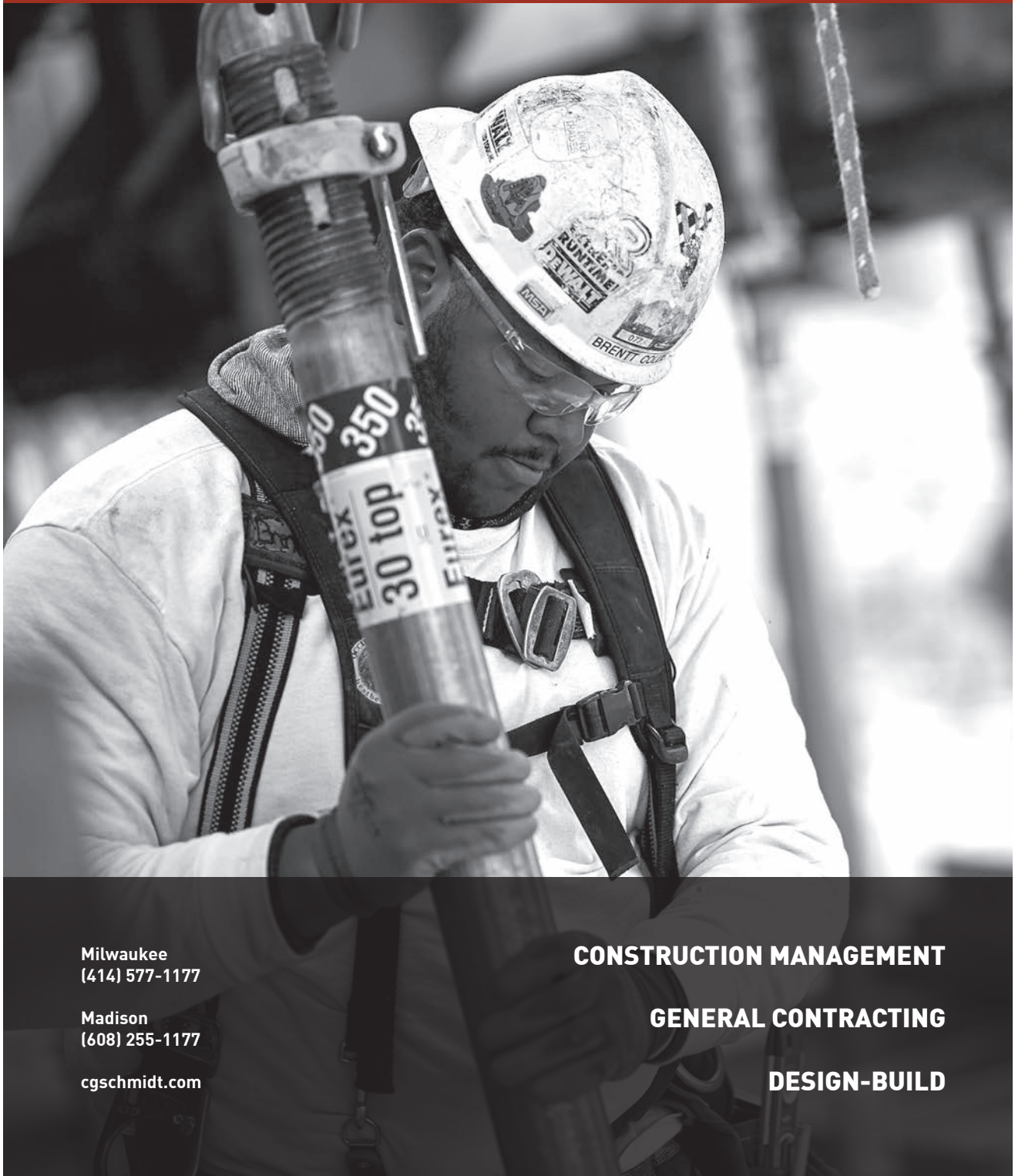
www.ejmengineering.com

TranSmart is a proud participant in WisDOT's first Mentor/Protégé class.



CGSCHMIDT^{INC}

CREATING EXCEPTIONAL FACILITIES THAT IMPROVE THE LIVES OF OTHERS



Milwaukee
(414) 577-1177

Madison
(608) 255-1177

cgschmidt.com

CONSTRUCTION MANAGEMENT

GENERAL CONTRACTING

DESIGN-BUILD

When the construction industry
is looking for a Partner that adds Value,
without the headaches, they put their Trust in
Diamond Discs International.

Cut Above the Rest!

- Largest Inventory of Industry Proven Tools
- 8a Federal Certification
- A+ Rated Fully Accredited Member of the Better Business Bureau
- Full DBE/EBE Certification – Achievement of DBE / EBE Participation Goals
- Professional, Knowledgeable & Technically Trained Staff
- Nationally Recognized Award Winning Firm

Industry Proven!

- Pro Series Concrete & Asphalt Cutting Diamond Blades
- Masonry, Stone and Steel Cutting Diamond Blades
- Diamond Core Bits – 1” to 18”
- Power Gas Saws
- Hand Held Power Tools / Grinders
- Safety Equipment / Safety Cones
- National and International Delivery Channels
- Same day pick-up and job site delivery options



**DIAMOND DISCS
INTERNATIONAL
EDITION VI**



Contact Diamond Discs International today! Call toll free at **888.582.3861** and ask about our exclusive and premiere pricing. Or simply e-mail ddisales@diamonddiscs.net.

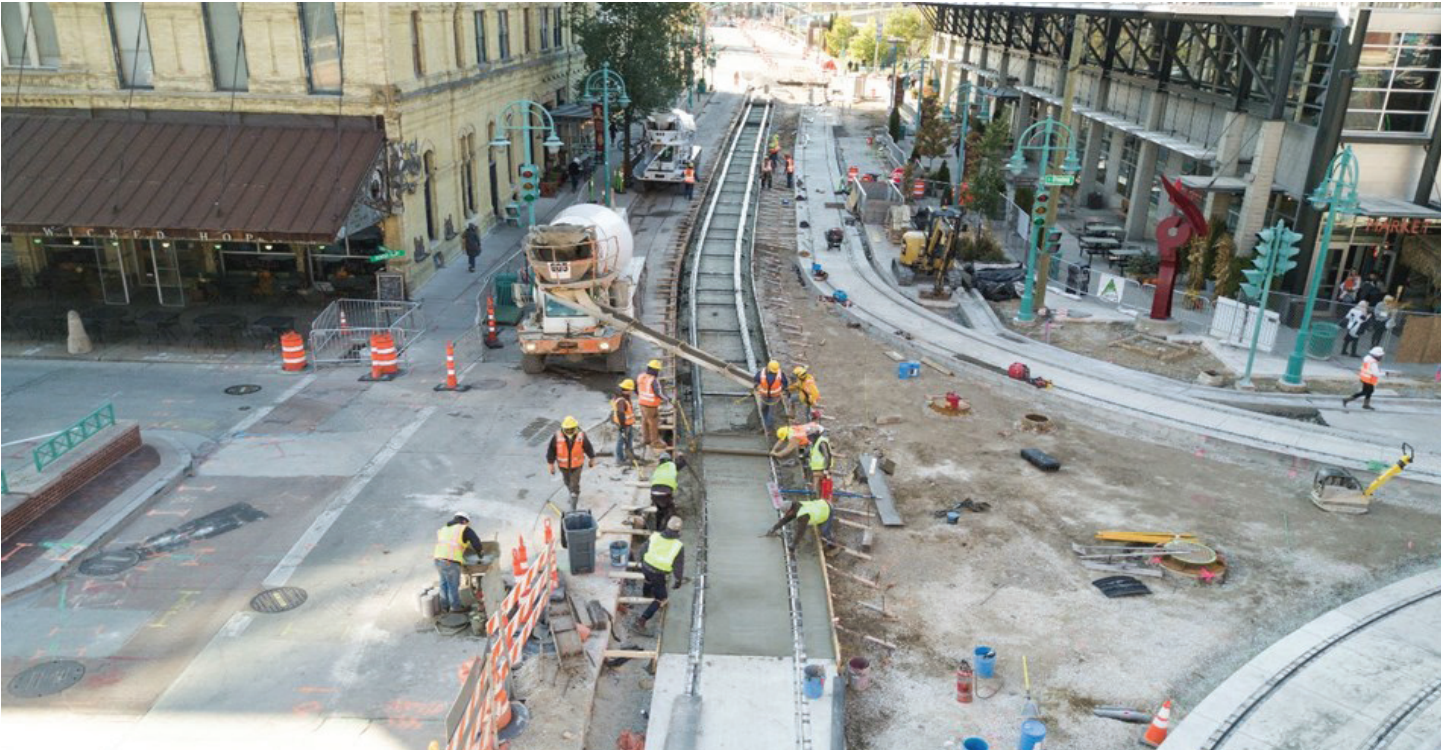
www.diamonddiscs.net



Kiewit

KIEWIT INFRASTRUCTURE CO.
GREAT LAKES AREA OFFICE
8501 W. Higgins Road, Suite 400
Chicago, IL 60631
(773) 458-1250
www.Kiewit.com

Congratulations to the this Year's NAMC-WI Award Winners!





Get in on this money-saving offer from The Daily Reporter

NAMC WISCONSIN CHAPTER MEMBERS QUALIFY FOR A SPECIAL DISCOUNT - START YOUR SUBSCRIPTION TODAY!

MEMBER OPTIONS

THE DAILY REPORTER

Regular 1 year subscription rate = \$239
NAMC Member Rate= \$189 **SAVE \$50**

With The Daily Reporter, you'll receive:

- 253 information-packed issues of the newspaper delivered Monday through Friday.
- Unlimited online access to current articles and article archives.
- In-depth reporting on all aspects of the construction and commercial real estate industries.
- 20+ new bids in the newspaper every day.
- HardHat e-alert with the latest news.
- Awards magazines and special bonus sections.
- Invitations to networking events, awards programs, and panel discussions.
- Project profiles, government news, and more.

JobTrac

Regular 1 year subscription rate = \$599
NAMC Member Rate = \$450 **SAVE \$149**

With JobTrac, you'll receive:

- All the features of The Daily Reporter.
- Unlimited access to over 400 open projects in the searchable construction bids database.
- My Preferences—Select specific criteria and receive an email with bidding opportunities that match your selection.
- My Jobs—Track up to 50 jobs and receive email notifications when the projects are changed or updated.
- Job mapping—Click to see where a specific job is located or discover jobs near you.
- Three extra “seats” or licenses—Up to three additional users from your company.
- One-click access to company contact info (including address, phone and fax number) for awarded and received bidders.
- Free listing in our Construction Resource Directory.
- JobTrac Daily Alert email.

Subscribe online! Go to www.dailyreporter.com/subscribe and enter promo code MemberDiscount.



EXCELLENCE IN QUALITY AND SAFETY



Kraemer is a full service heavy civil contractor offering expertise in the following primary markets: transportation, rail, and marine.
Please visit us on the web at: www.KraemerNA.com.

Design by HNTB



12773 W SILVER
SPRING DR.
BUTLER, WI 53007
414-527-2300

Your "One Stop Shop" for Truck Bodies!
From 1-Tons up to Quad Axle Dumps,
Service Bodies, Flatbeds, Van Bodies,
Liftgates, Pusher/Tag Axles, Hoists.
Cranes, Snowplows, Salt Spreaders,
Van Interiors, Tarps, Toolboxes, Hitches,
and much more after-market equipment,
Brake & Equipment has you covered!
Stop in or give us a call today!



12775 W. SILVER
SPRING DR.
BUTLER, WI 53007
262-781-2224

AUTO BRAKE CLUTCH & GEAR CO., INC.
Heavy Duty Truck Parts

If you need parts or accessories for your commercial truck, we've got you covered!
We stock parts for brakes, suspensions, axles, plows, salt spreaders, tarps, pumps, valves....you get the idea! We also stock lights, mirrors, fenders, hitches, and many other products to keep you on the road and increase your "Up Time". Stop in soon and let's keep your truck rolling!





Zignego Company, Inc.

W226 N2940 Duplainville Road | Waukesha, WI 53186

(262) 547-4700 | F (262) 547-4508

Congratulations 2018 Winners!

NAMC Golden Champion Award for Leadership and WisDOT Secretary's Golden Shovel Award



Founded in 1980, Zignego Company, Inc. has been successfully building urban, highway, and interstate construction projects throughout Wisconsin ever since. Zignego values hard work, positive relationships with local businesses and suppliers, and focuses on delivering a consistent, high quality product.



威州華人商會

Wisconsin Chinese Chamber of Commerce

Wisconsin Chinese Chamber of Commerce (WCCC)

*Congratulates All Winners of
The Secretary's Golden Shovel Awards*

And

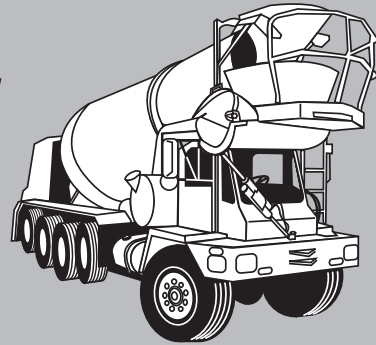
NAMC Golden Champion Awards

WCCC Values ≈ Unity • Dedication • Innovation • Growth

www.wisccc.org

info@wisccc.org

SCHMITZ READY MIX, INC.



OUR LOCATIONS

Milwaukee, Port Washington, Grafton, Sheboygan/Manitowoc, Richfield, New Berlin, and Franklin

CONTACT US

414.831.2401



LaLonde Contractors, Inc.



Congratulations –
NAMC Golden Champion
&
Secretary's Golden
Shovel
Award Winners

LaLonde Contractors is a national award winning concrete paving contractor.

Safety, quality and integrity are the focus for all our projects.



1609 Lincoln Avenue
Waukesha, WI 53186

(262) 544-1515
(262) 544-1715

lalondecontractors.com

Pomp's

TIRE SERVICE, INC.

"The Tire Professionals"



- Integrity
- Reliability
- Honesty

When you need it most.

Selling Tires and Service Since 1939

www.pompstire.com

**AT GILBANE, WE'RE ABOUT PEOPLE, RELATIONSHIPS AND COMMUNITY.
IT'S JUST HOW WE'RE BUILT.**



BUILDING PARTNERSHIPS

Knowledge Transfer + Opportunities = Successful Projects

Exciting Career Opportunities

www.gilbaneco.com/careers

www.gilbaneco.com

Build With Us

www.gilbaneco.com/build-with-us



CORRE ANSWERS
SOLUTIONS
RESULTS

**Large-firm capabilities
with small-firm attitude.**

Our industry-recognized professionals solve complex engineering challenges and provide specialty services **all under one roof.**

- | | |
|----------------|------------------------|
| Transportation | Real Estate |
| Structures | Historical |
| Landscape | Public Involvement |
| Architecture | Construction Oversight |
| Environmental | Survey |

DUMP TRUCKING
Since 1984



Certified - MBE
DBE / EBE / SBE
HUD-Sec 3

Eric M. Johnson
President
email: Eric@SouthStarTrkg.com
www.southstartrkg.com

Cell (414) 379-3426
Bus. (414) 445-5353
Fax (414) 445-3388
6122 N 76th Street
Milwaukee, WI 53218-1204

HERITAGE
READY MIX



6122 N 76TH STREET • MILWAUKEE, WI 53218-1204

ERIC M JOHNSON
president

heritagereadymix@aol.com

OFFICE: (414) 445-5353 • FAX: (414) 445-3388 • CELL: (414) 379-3426

raSmith

CREATIVITY BEYOND ENGINEERING

- Transportation/Traffic
- Structural Engineering
- Construction Services
- Surveying
- 3D Laser Scanning/
UAS

raSmith.com

KL Engineering
[A] Better Experience

Offering Engineering Services Since 1991
Transportation-Traffic | Site Design-Civil | Municipal-Utility
Land Survey-Mapping | Lighting-Electrical | Structures

klengineering.com | 608.663.1218 | 800.810.4012
5400 King James Way | Suite 200 | Madison, WI 53719

SPANN
& ASSOCIATES

Bruce A. Spann, PE
President & CEO

Consulting Engineers

W175 N11086 Stonewood Dr. • Suite B • Germantown, WI 53022-6509
Office: 262.255.8190 • Fax: 262.255.8195 • Direct Line: 262.345.1480
bspann@spannllc.com • www.spannllc.com



WALBEC GROUP

Zachry Tech. Inc. PCI PINE & GOLDEN CRM NEA

HELPING PEOPLE
REACH THEIR
DESTINATIONS

Visit
Walbecgroup.com
to learn more!

Asphalt Paving

Asphalt, Aggregate &
Concrete Products

Engineering & General
Contracting Services

Excavation & Grading

Heavy Highway Structures
& Industrial Construction

Site Concrete Services

Agricultural Products
& Services



ROCK ROAD COMPANIES, INC.
SINCE 1913

Paving tomorrow's future today

www.rockroads.com

Asphalt Paving

From Engineering
to Installation

301 W B-R Townline Rd
Janesville, WI

608.752.8944

BBA

BROWN BEASLEY ACCOUNTING, LLC

Lydia Beasley, CEO
Accountant

1850 N. Dr. Martin Luther King Dr. 53212
Ph: 414-264-6490 ext. 13 | Fax: 414-264-6495 | E-mail: Lydia@BBA-Accountant.com

Specializing in DBE certifications and resolving DBE contractual disputes with a proven track record.

1907 Sherman Avenue, Suite 15
Madison, Wisconsin 53704
P: 608.695.0530 / F: 608.531.2828
jsharma@sharmaadr.com
www.sharmaadr.com



Sharma Law Office

OTIE transportation is **now...**
Oneida Engineering Solutions



Transportation Engineering Design
Construction Management
Survey / Natural Resources

www.oesllc.com

Green Bay
Madison
Milwaukee
Chicago



**Creative Planning
Innovative Solutions
Powerful Results**

Transportation Engineering
Highway - Street - Aviation - Rail

262.376.4246
Cedarburg

  www.msquaredengineering.com



Van Walling PE
President

Walling Consulting Services
W173 N10200 Woodbridge Ln
Germantown WI 53022

414.702.1311
van@wallingcs.com



Write Like That, Inc.
Proposal Writing and Management, Website/Digital Content

Marci Martin

Principal, Proposal Management
9789 Enterprise Rd. • Tomah, WI 54660
Office: (608) 286-3913, ext.1
Mobile: (608) 797-7350
marci@writelikethat.com



PRISM TECHNICAL
Management & Marketing Services, LLC

**ENGINEERING & CONSTRUCTION WORKFORCE
DEVELOPMENT AND DIVERSITY SINCE 1995**

MKE OFFICE

2745 N. Dr. Martin Luther King, Jr. Dr.
Suite 100 - Milwaukee, WI 53212
P: 414.847.0990 F: 414.847.0992

STL OFFICE

100 South 4th Street
Suite 550 St. - Louis, MO 63102
P: 314.797.5110 F: 314.797.5001

PRISMTECHNICAL.COM

Tunji-Lesi CPA, LLC

Accounting, Consulting, Tax & Payroll Services

Adetunji A. Lesi CPA, CMA, CGMA, MBA - Principal

NAICS: 541211; 541213; 541214;
541219; 541611; 541614; 561440

6314 Odana Rd, Suite 14
Madison, WI 53719

Ph: (608) 721-1745
Cell: (608) 345-5002
Fax: (608) 721-1932
tunjilesi@tunjilesicpa.com
Web: tunji-lesicpa.com

**HARKINSON
CONSULTING LLC**

Julie Harkinson
608.772.5169

info@harkinsonconsulting.com

MADISON

MILWAUKEE

CHICAGO

WHERE LABOR, BUSINESS, AND GOVERNMENT COMPLIANCE MEET.

Bonding Relationships.



Knowledge.
Experience.
Trust.

Surety Bonding & Insurance

Wisconsin's Largest Independently Owned Surety Bonding Agency

Phone 262.781.3714

www.brehmeragency.com

Investing
in our
community.



BMO Harris Bank is proud to support the **National Association of Minority Contractors-Wisconsin.**



Seeking visionary collaborators.

Aurora is dedicated to making our communities healthy in ways stronger than medicine by using our purchasing power to support diverse businesses, including those owned by women, veterans and people of color. And we can't wait to see what we can achieve together.

To apply to be a supplier with Aurora, call **866-830-6256** or email supplierdiversity@aurora.org.

